



MONTHLY MEMBERSHIP PROGRESS REPORT

District 105SE

Results as of: 2/28/2015

GMT: Elisabeth Haderer

LOCATION ENGLAND

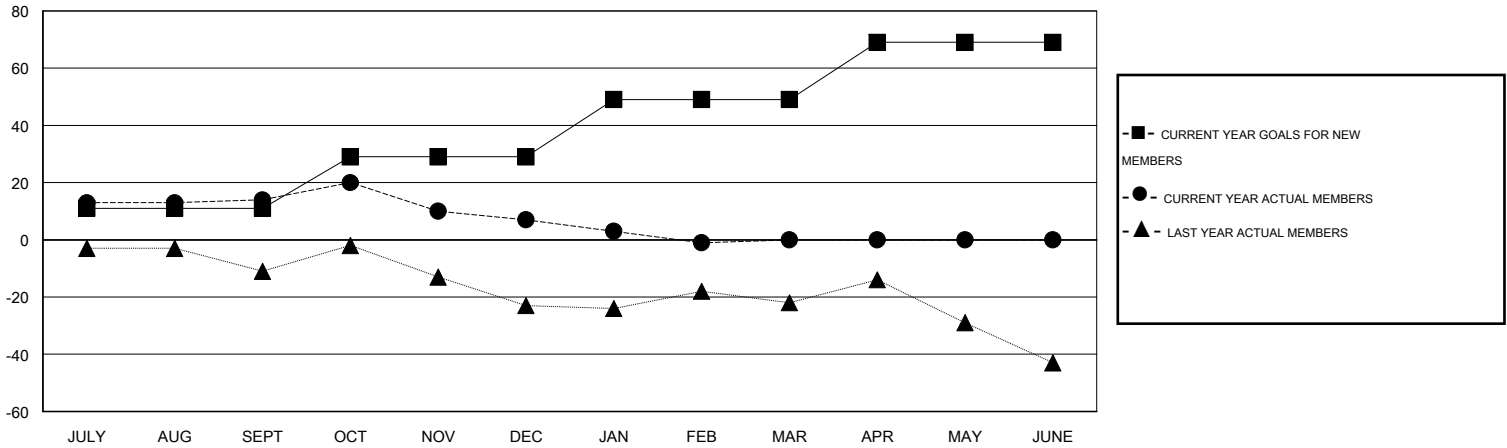
GMT CA 4

Clubs					Members				
RESULTS FOR 2014-2015					RESULTS FOR 2014-2015				
QUARTER	NEW CLUB GOAL	NEW CLUBS	DROPPED CLUBS	NET GAIN/LOSS	QUARTER	NEW MEMBER GOAL	CHARTER AND NEW MEMBERS ADDED	DROPPED MEMBERS	NET GAIN/LOSS
JULY/AUG/SEPT	0	0	1	-1	JULY/AUG/SEPT	11	40	26	14
OCT/NOV/DEC	1	0	0	0	OCT/NOV/DEC	18	38	45	-7
JAN/FEB/MAR	0	0	0	0	JAN/FEB/MAR	20	17	25	-8
APR/MAY/JUNE	1	0	0	0	APR/MAY/JUNE	20	0	0	0

GOALS AND ACTUAL NEW CLUBS CUMULATIVE



GOALS AND ACTUAL MEMBERS CUMULATIVE



DROPPED CLUBS: 1	35 CLUBS OF 69 ADDED 1 OR MORE NEW MEMBERS	<u>GENDER DISTRIBUTION</u>	
		MALE	1,222 (75.06%)
		FEMALE	406 (24.94%)
<u>DROPPED MEMBERS</u>		<u>FAMILY UNIT MEMBERS</u> 190	
DECEASED	19	<u>HEAD OF HOUSEHOLD</u> 95	
CLUB CANCELLED	0	<u>NON-HEAD OF HOUSEHOLD</u> 95	
OTHER	77		
TOTAL	96		

[CLICK HERE FOR HEALTH ASSESSMENT DATA](#)